

# GIGA SHOT

## Instruction Manual





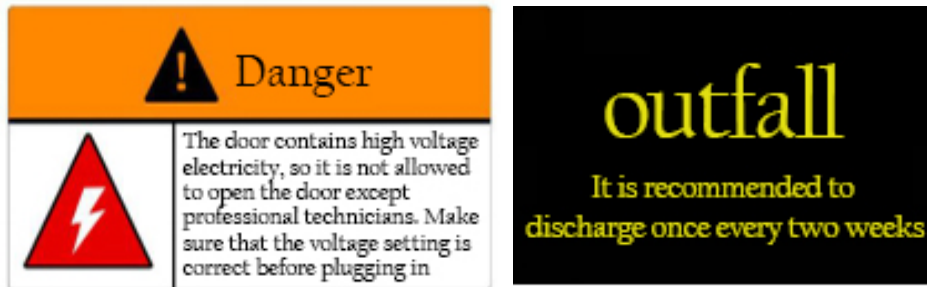
## **WARNING**

- ✧ Please read the manual before installation and use.
- ✧ Please put the manual together with the machine.

## ATTENTION

To have better shooting experience, please do not put the machine under Direct sunlight or near infrared red LED light Before use, please notice the warning decal on the machine.

1. **Danger:** It may cause damage if the machine is not handled properly
2. **Outfall:** It is recommended to discharge water once every 2 weeks, otherwise it may cause damage to the compressor.



This machine is not fireproof, do not put it near or touch any fire source maintenance and precautions: The power supply must be turned off when the machine is maintained and repaired.

In order to avoid a short circuit, relevant personnel should turn off the power supply before touching the internal components of the machine.

If this operation requires power on, it must comply with the requirements of the operating instructions.

Do not touch the power plug with wet hands

Do not scratch, cut or excessively bend the power cord

Use insulation to wrap damaged power cords

When replacing components, be sure to choose appropriate OEM Parts. Using incorrect part may cause fire or electrical short circuit, damaging the motherboard and components.

This machine is suitable for indoor use and is not suitable for outdoor use.

Do not place the machine in an unstable, tilted or vibration-prone place

Regularly check the line condition once a week and comprehensively check the equipment every month

Do not place the machine in a place exposed to direct sunlight to avoid damage to the internal parts of the machine.

The equipment must be grounded, and the three-plug power supply of this equipment must be plugged into a grounded power outlet.

These are precision equipment. Please do not drop it or subject it to physical impact.

It is strictly prohibited to place the machine close to objects with high magnetic fields or strong radio waves.



This machine is not waterproof. To prevent fire or electric shock, do not allow any liquid to enter the machine, or expose it to dripping water or moisture.

# CONTENT



GIGA SHOT .....	1
ATTENTION .....	3
CONTENT .....	4
I. How to move position the Machine.....	5
II. Unsuitable places.....	5
III. Where to place .....	5
IV. Precautions before Startup.....	6
V. Wiring and Precautions .....	6
Installation and Maintenance.....	9
I. Installation and commissioning.....	9
II. Visual inspection .....	9
III. Operation inspection .....	9
IV. Maintenance.....	9
V. Cleaning .....	10
Error Code.....	17
Troubleshooting.....	17
Instruction on game.....	18
Control table and game start scene .....	18
I. How to play .....	21
II. How to use the alloy toy rifle .....	21
III. Menu setting .....	22
IV. Camera Calibration .....	28

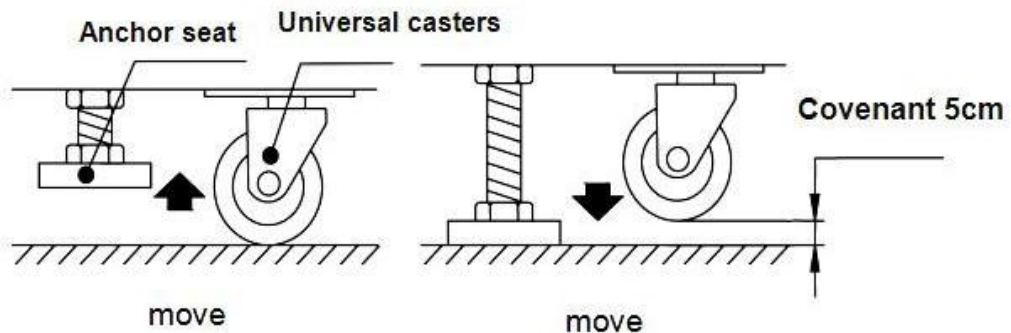
### 3. How to move position the Machine

  Please place it on flat ground where it won't slide easily;

  Please use the following foot to fix the machine (as shown below)

3. Loosen the tightly locked nuts of the foot, tighten the bolts of the foot with a wrench, and keep the trundle approximately 5mm away from the ground.


  Tighten nuts clockwise and fix them.




### 1. Unsuitable places

1. Place in which the machine may have condensate water or with high humidity;
2. Place close to high-temperature objects;
3. Place close to dangerous substances;
4. Smooth or unstable place;
5. Place close to equipment that may easily produce sparks;
6. Place with heavy vibration;
7. Dusty place.

### 8. Where to place

 **Warning:** The machine is only suitable for indoor use, not outdoor use.

 **Warning:** Please do not use the forklift to move the machine, otherwise it may be damaged.


## 9. Precautions before Startup


1. Check parameters of the power supply. Ensure parameters of the machine meet the requirements, or the machine might be damaged or there might be fire accident.
2. Excessive loads on a power outlet might cause the socket to overheat, causing a fire.


### **Warning**


- ⦿ Do not change or replace parts at your will when assembling the machine  
fire disaster or short

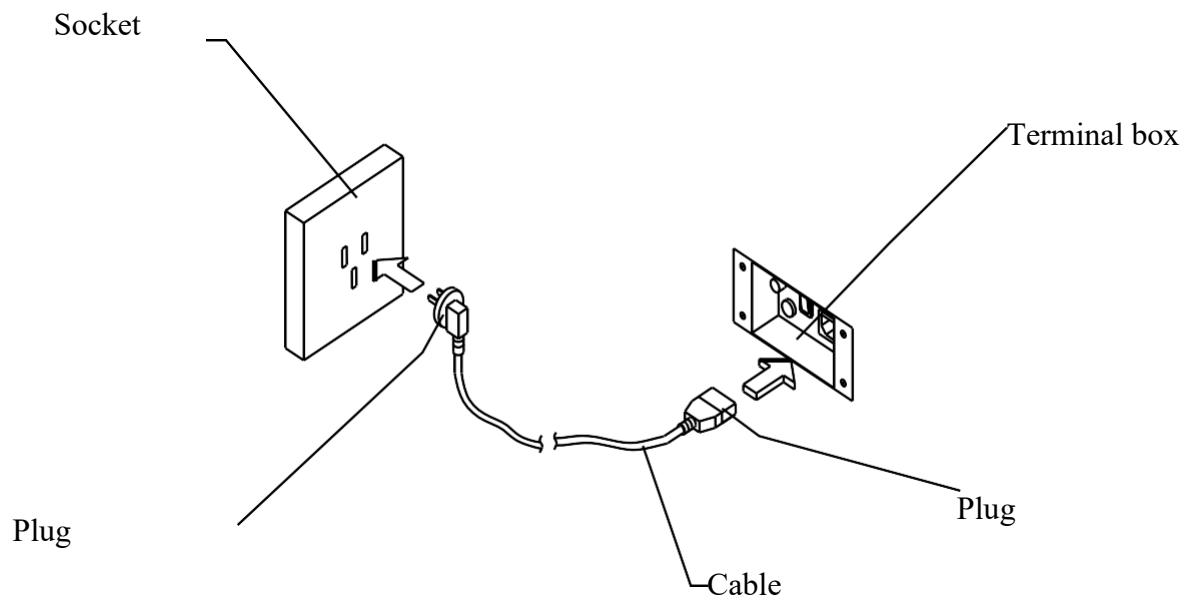
## 3. Wiring and Precautions


 Connect one end of the cable to the terminal box of the machine, and connect the other end to the socket.

 Connect the power supply according to the voltage on the label, or the machine might be damaged.

 Please confirm whether there is grounding in the socket to avoid unnecessary damage.

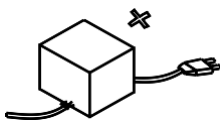
 If the grounding cannot be done through the socket, please try other methods.



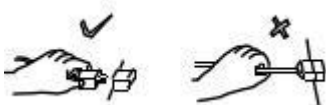
 **Warning:** The working voltage of the machine is 220V. Please connect the power supply according to the label, or the machine might be damaged.

 **Attention:**

8. The cable cannot be pressed by heavy objects, or it might be easily damaged and cause short circuit, and even fire disaster.



9. When unplugging the cable, you should grasp the plug instead of the cable.



10. It is not allowed to directly unplug with wet hands.



11. It is not allowed to directly unplug with wet hands.



12. It is not allowed to forcibly stretch, twist or expose the cable, or put it close to high-temperature objects.

13. It is not allowed to put the cable at places where it may be easily kicked or touched.



14. Use correct voltage and fuse (refer to technical parameters).

# Installation and Maintenance

## 1. Installation and commissioning

2. Please check the accessory list before you assemble components during installation;

3. The ground must be flat and solid. After placing the machine, adjust the feet to the ground and level the machine.

## 4. Visual inspection

To safely use the machine, please check the following before startup:

5. Whether the warning sign is intact, visible and stuck correctly.

6. Whether parameters of power supply are consistent with the machine amperage draw

7. Whether screws of each component are tight and aligned.

8. Whether the connectors and terminals are loose.

9. Whether the machine is placed in a stable location; whether the adjustment of game feet are proper and level.

10. Whether the machine is placed properly.

## 11. Operation inspection

12. Whether the speaker works normally.

13. Whether the header / light box and the button lights are on.

14. Whether the image is clear and normal.

## 15. Maintenance

16. Before operation, confirm the machine runs normally and then use it;

17. When there is dirt on the machine, wipe it with a soft cotton cloth with detergent;

18. After the new machine has been used for one month, check whether each part runs normally and follow the weekly and month maintenance schedule.

19. Often check the machine.

## 20. Cleaning

### 21. Housing

Clean dirt on the surface of the machine with clean and soft cotton cloth.

### 22. Display

Clean the outside of the display with clean and soft towel or rag. Any cleaner with acid should not be used to clean the display.

### 23. Exhaust fan

The exhaust fan is one of the main tools of dissipating heat inside the machine. It has to be clean and run normally with unobstructed outlet.

There are cooling fans on the back of the main cabinet and player console



### **Cut off the power supply for maintenance and repair of the machine.**

To prevent a short circuit, relevant personnel should cut off the power supply when touching internal components of the machine. If the operation requires power supply, it should meet the requirements of the user's manual.

### **Use proper parts for replacement.**

Improper parts may cause a short circuit, and damage of the main board and the components.


### **26. Do not disassemble, assemble and change the equipment by yourself.**

It may cause a short circuit and machine failure, and even fire disaster.

### **Do not place vases, cups, containers with water, chemicals or heavy objects on the machine.**

The spilt liquid may cause a short circuit and damage of parts. Meanwhile, falling objects may injure people and damage the machine.

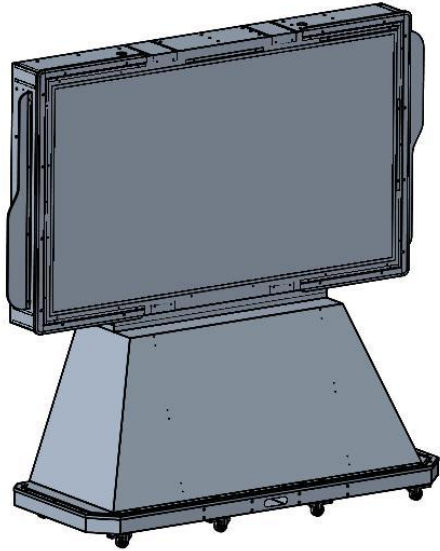
### **Do not place objects in the air outlet of the machine.**

 The blocked air outlet may cause temperature rise inside the machine, affect the normal operation of the game, and even damage the parts.

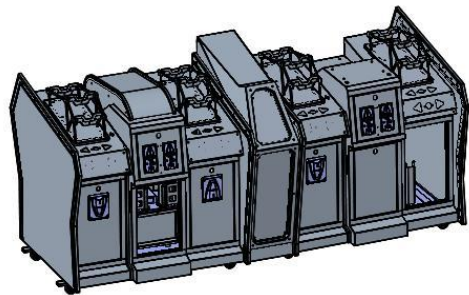
### **Do not repair the machine by yourself.**

It may cause a short circuit or malfunction and other failure.

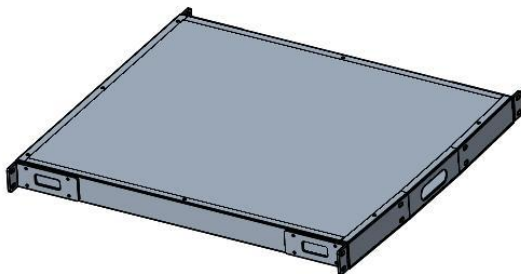
# GIGA SHOT Installation instructions



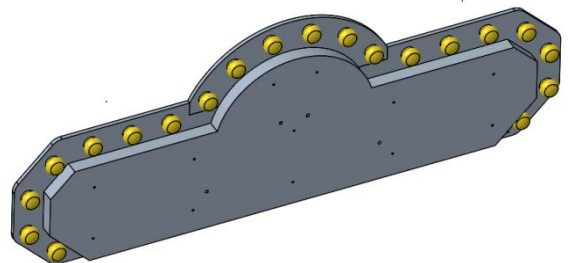
**Main cabinet x 1**



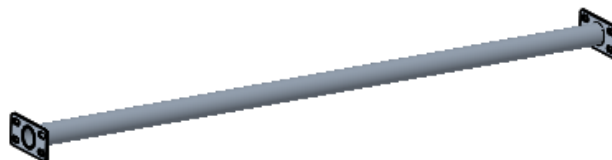
**Player Console x 1**



**Base plate x1**

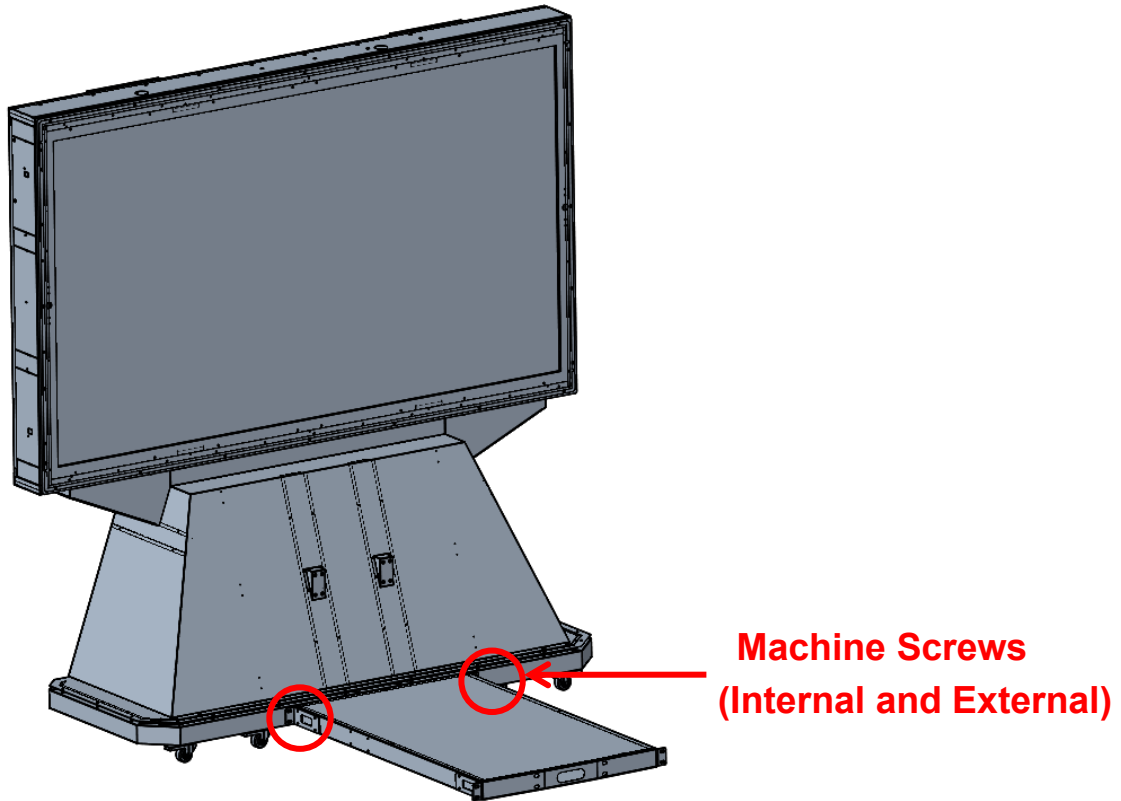


**Light box / Marque x1**

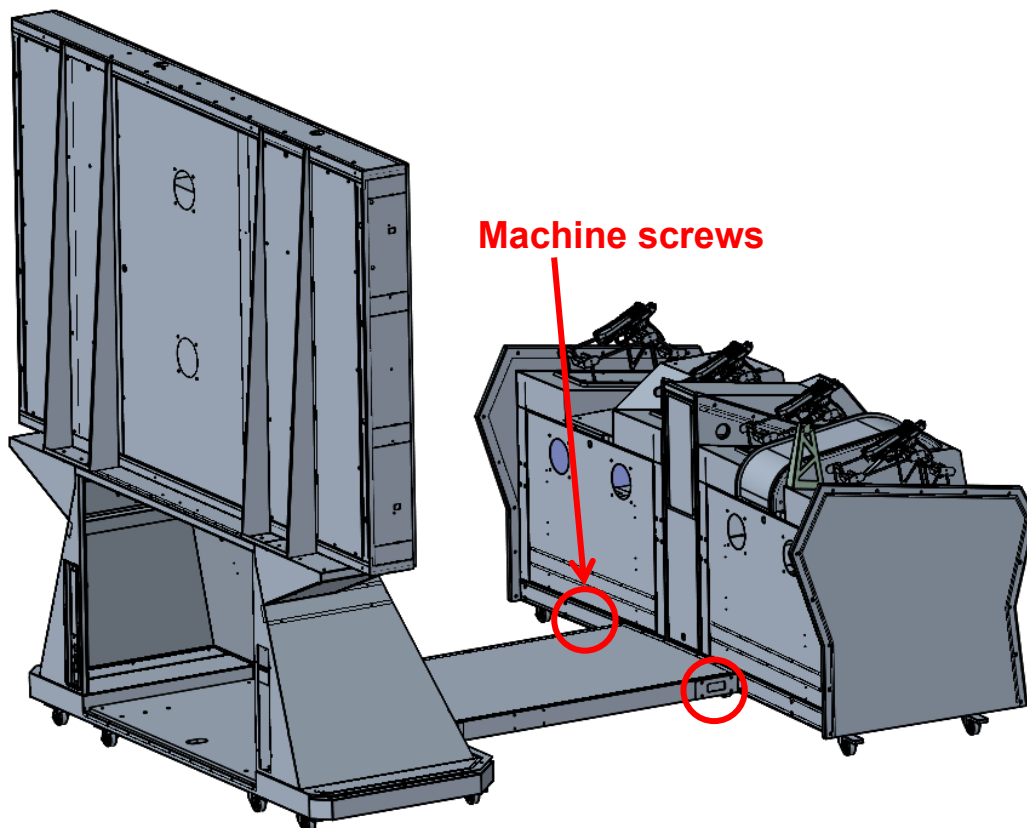


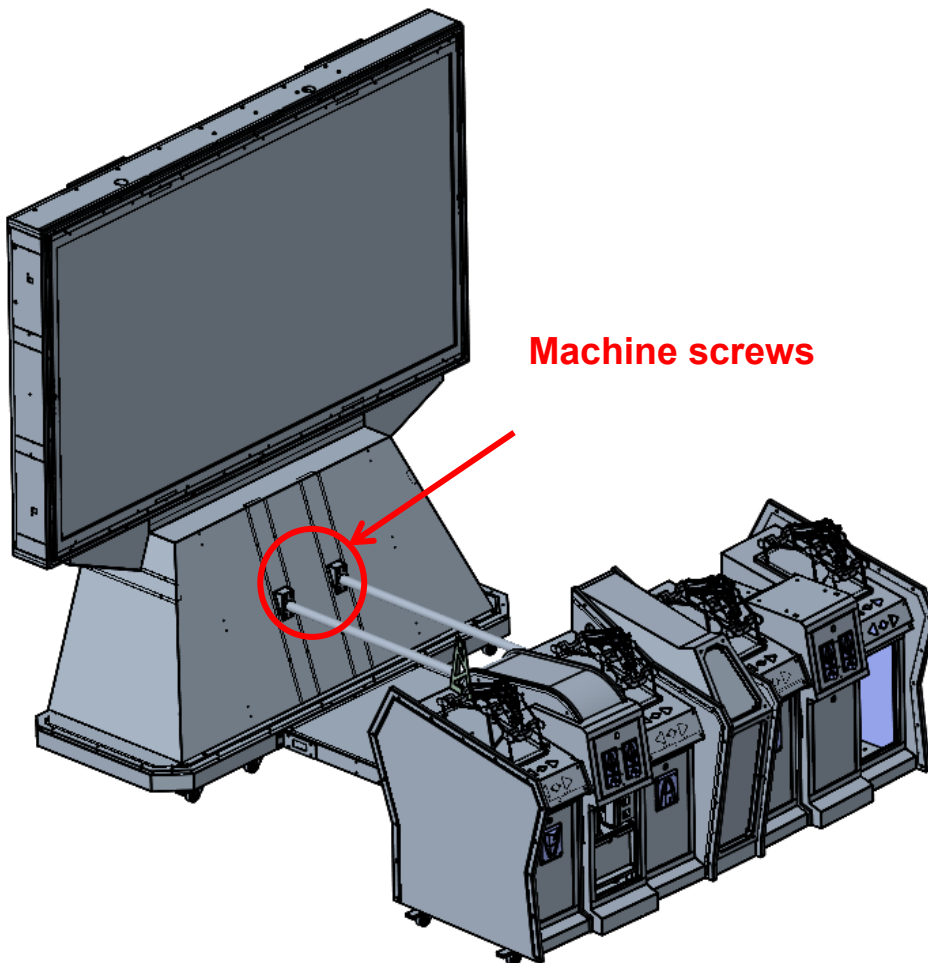
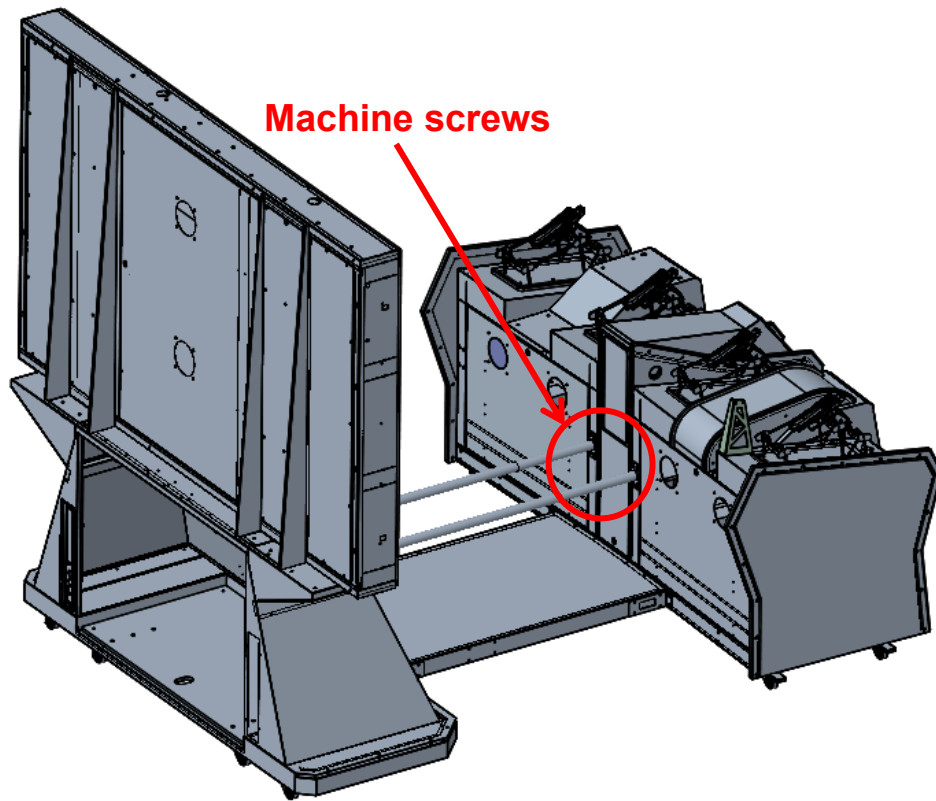
**Connecting tube x 2**

**Step1: Fix the LCD enclosure to the Base plate.**



**Step 2: Fix the control panel enclosure to the Base Plate.**

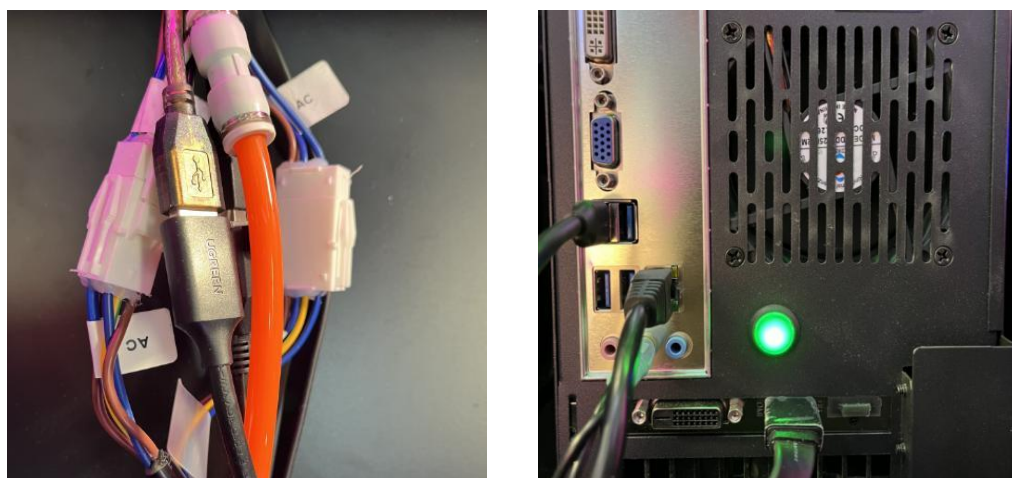




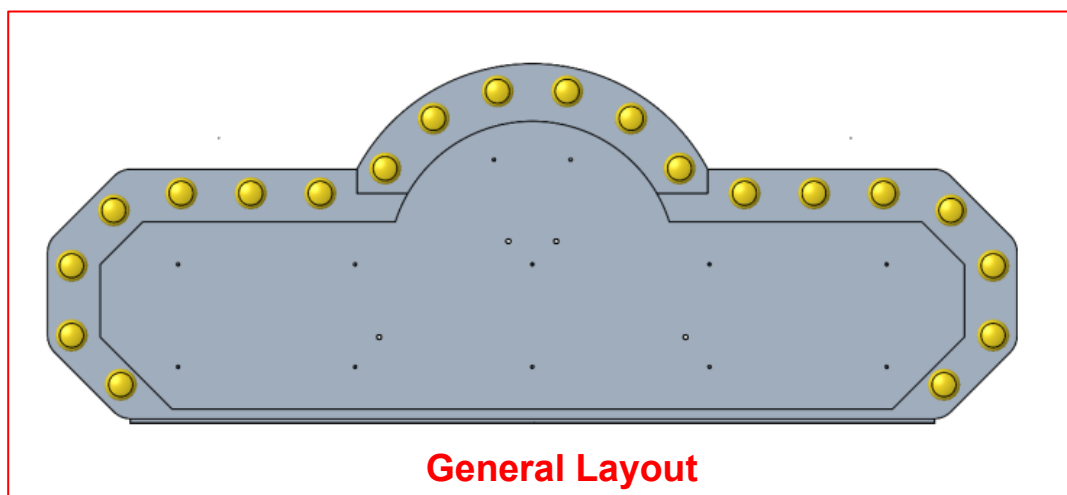
As shown in the above image, the connector is installed between the control panel enclosure and the LCD enclosure, secured with matching screws ( **It is best to loosely fit all machine screws in place, and then tighten them once all metal tubes and plates are installed** ).

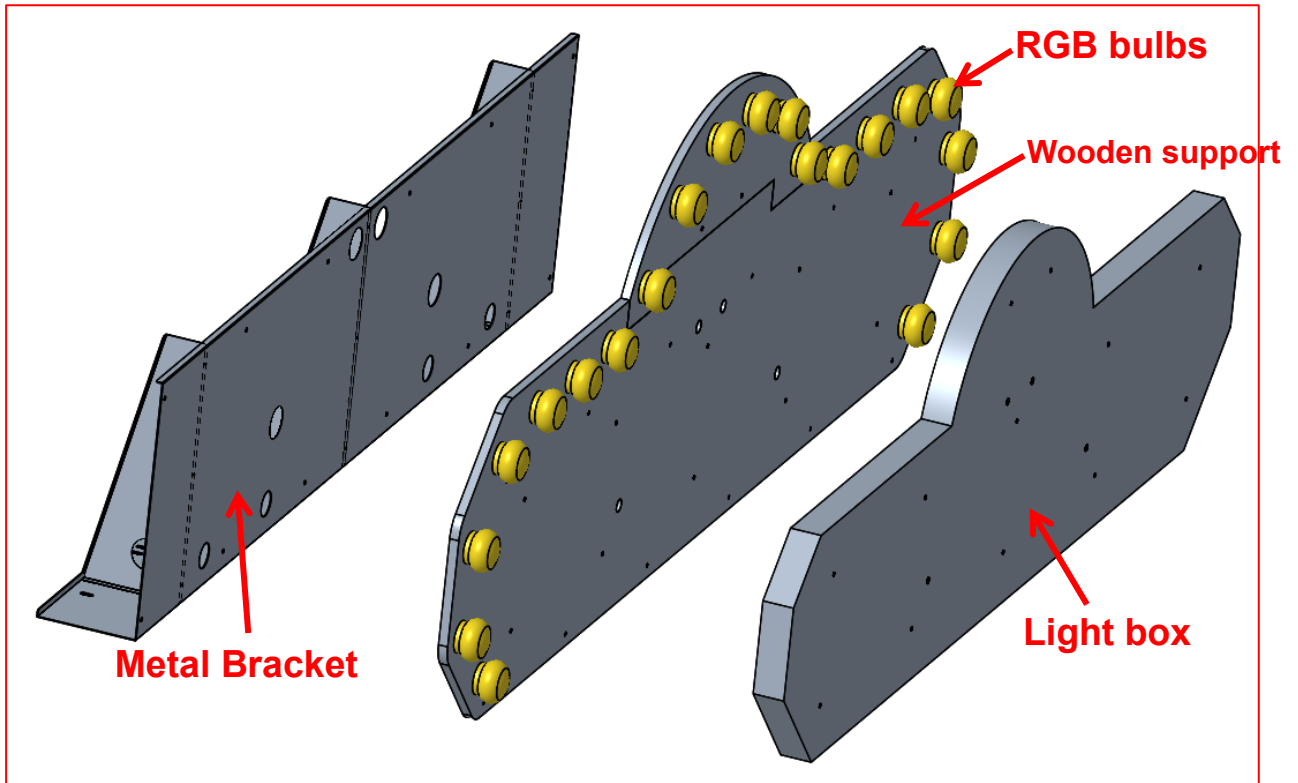
During installation, align both ends of the connector with the corresponding ports, then connect the power cable, signal cable, and air hose accordingly. Connect the network cable, USB cable, and HDMI cable to the computer host.

The actual product image is shown below:



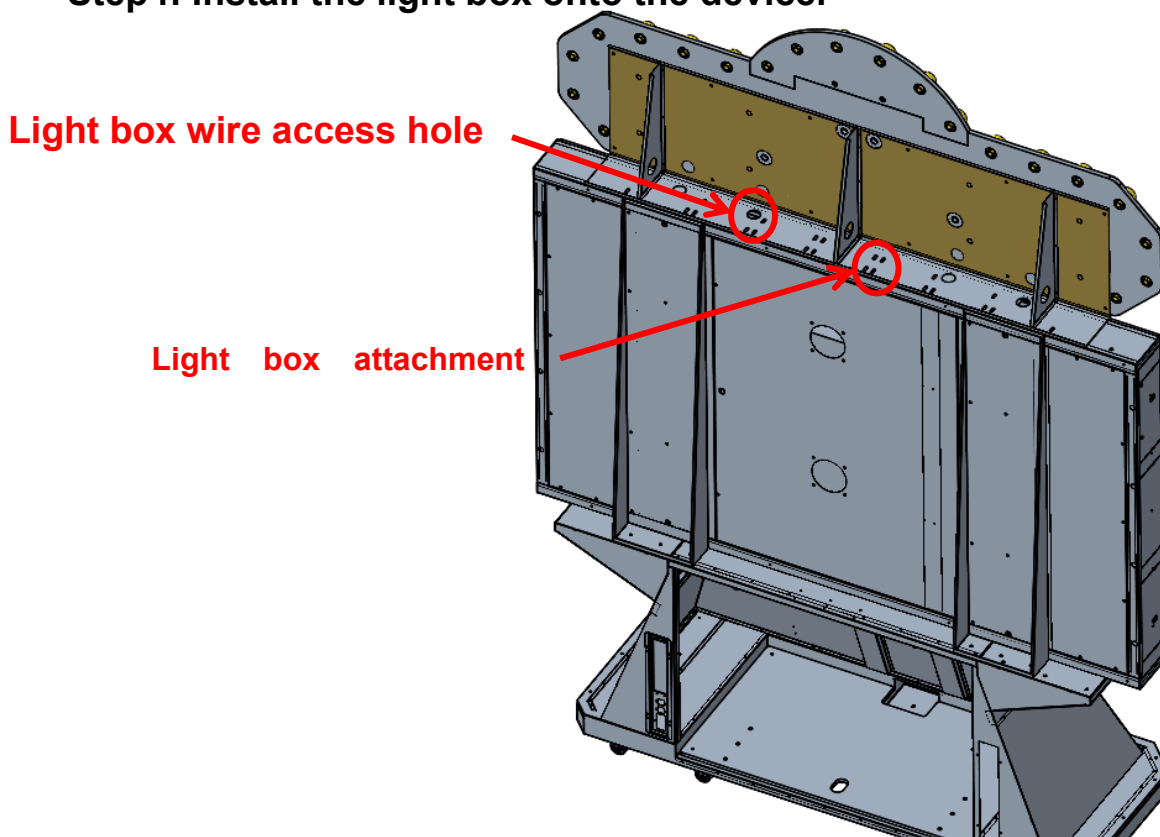
### Step3: Assemble the Lightbox



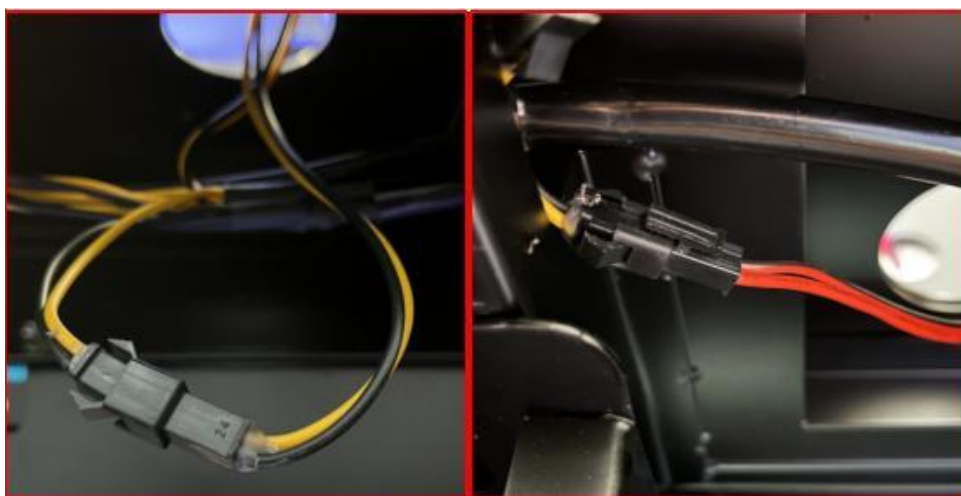


As shown in the image above, fix the light box, wooden board support and hardware support together.

**Step4: Install the light box onto the device.**



As shown in the image above, prepare the complete lightbox and place it in the correct position. Then, use the corresponding screws to secure the light box to the top of the monitor. The actual connection of the light box power cable is shown in the image below. **(Please make sure the wire is not Pinched at this point otherwise it could cause damage in the future).**



## Error Code

Code	Display	Description
E11	System Error	IO Connect Error
	Please Contact The Staff, Tickets Time Out.	Tickets Time Out
	The Cursor Is Out Of Range	The aiming point is off-screen

# Troubleshooting

Error	Reason	Solution
After the machine is powered on, the power supply works (the power fan rotates), but the screen does not light up.	Monitor is not receiving power	Replace or connect the power cord
	The signal cable is not Connected or damaged	Connect or replace signal cable
No response when the machine is powered on	Fuse blown	Replace fuse
	Power is not connected	Is the power switch on?
No power to the control board	Check whether the power box output is normal	Check whether the 5V, 12V, and 24V outputs of each partition of the power box are correct.
After the machine is powered on, the monitor displays a white screen with no image or sound.	Host is not working	Manually start the host power start button
		The host power supply is broken or needs to be replaced.
		Motherboard memory module has poor contact or needs to be replaced.
		If the motherboard is broken, please Contact professionals and the manufacturer to deal with it.
The gun cursor is abnormal or jumps a lot	Recalibrate	Enter the background to recalibrate the corresponding gun
	Wire line failure	Maintenance wire line
	Potentiometer failure	replace
Gun vibrates abnormally	Check for structural issues	Open the gun cover and check whether the screws are loose, whether the slide rails are worn, and whether the motor is normal.

# Instruction on game



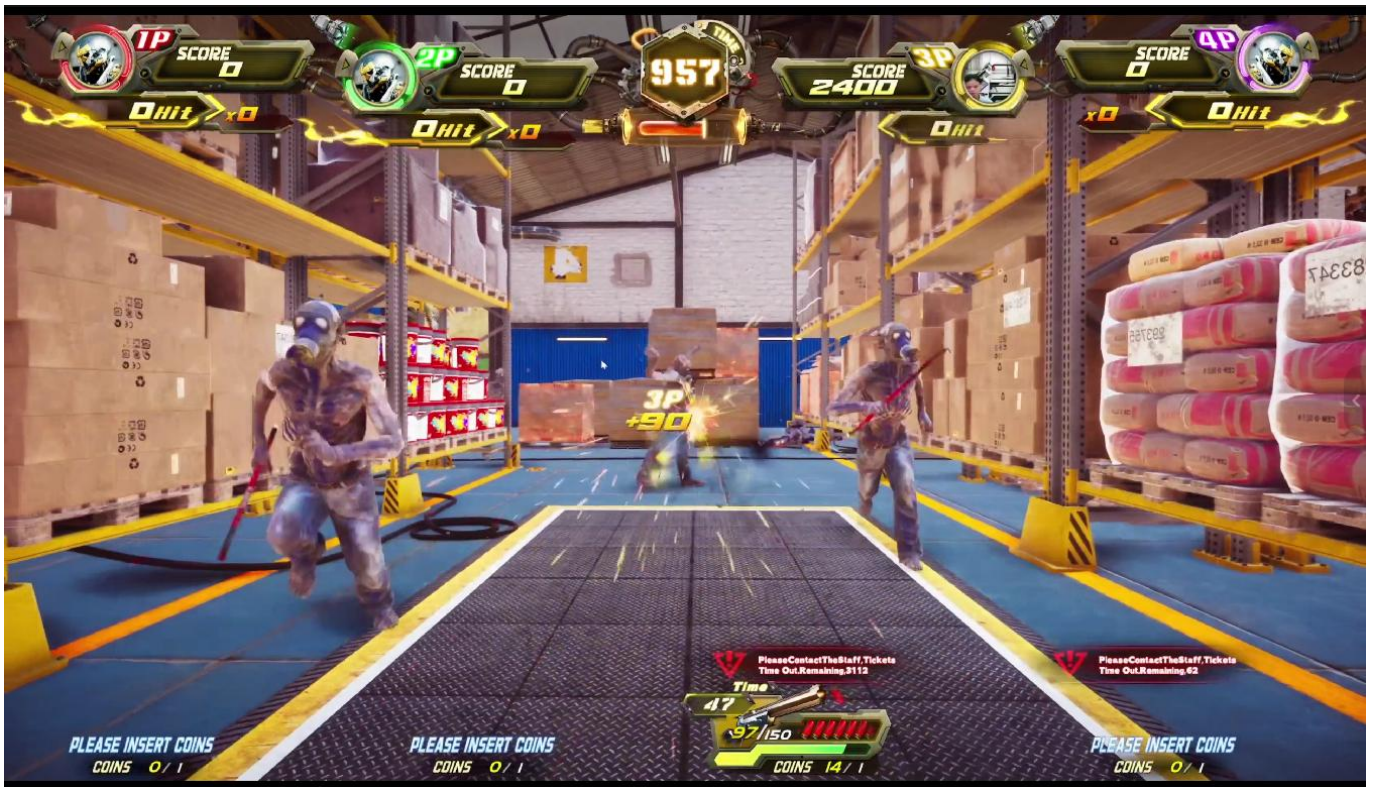
## Control table and game start scene



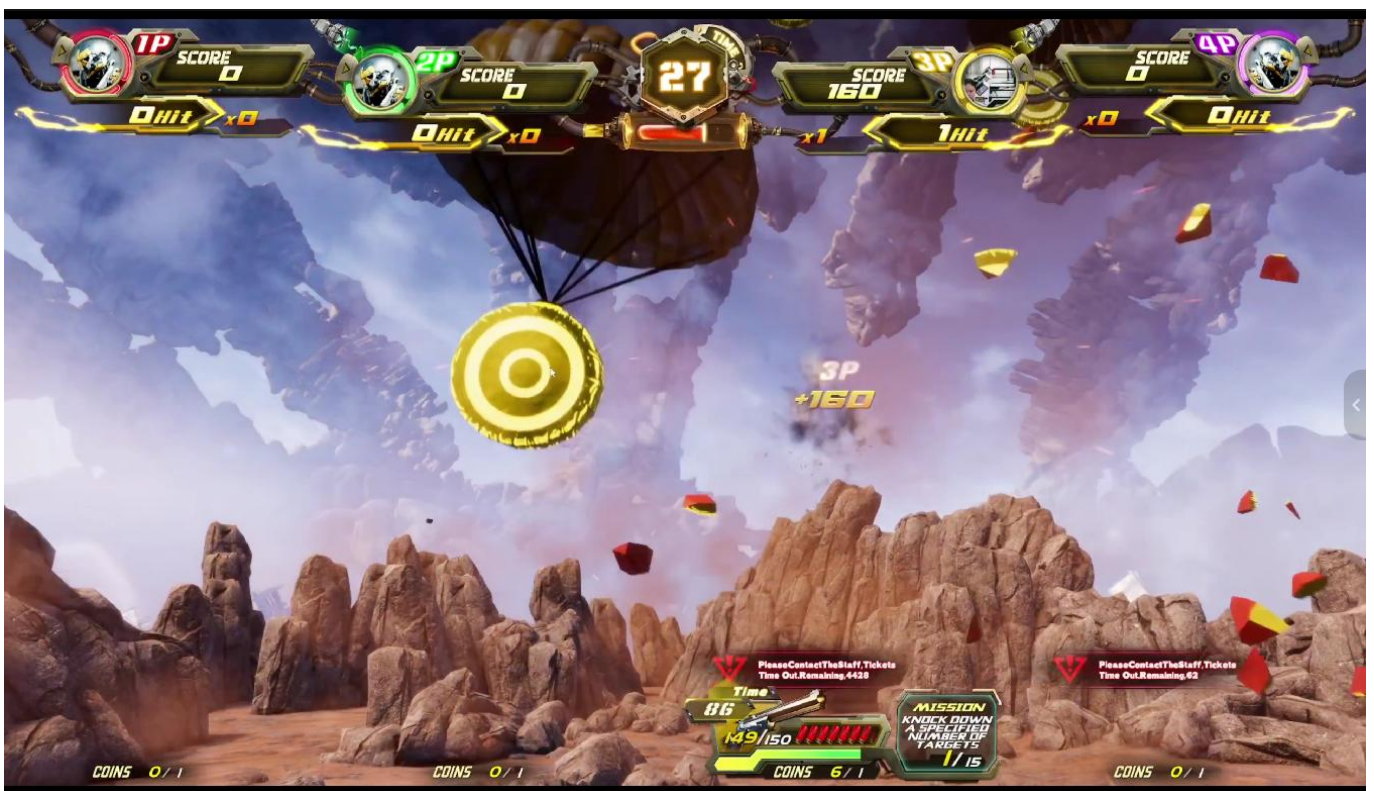
### 1. Route 1: Crazy Shooting



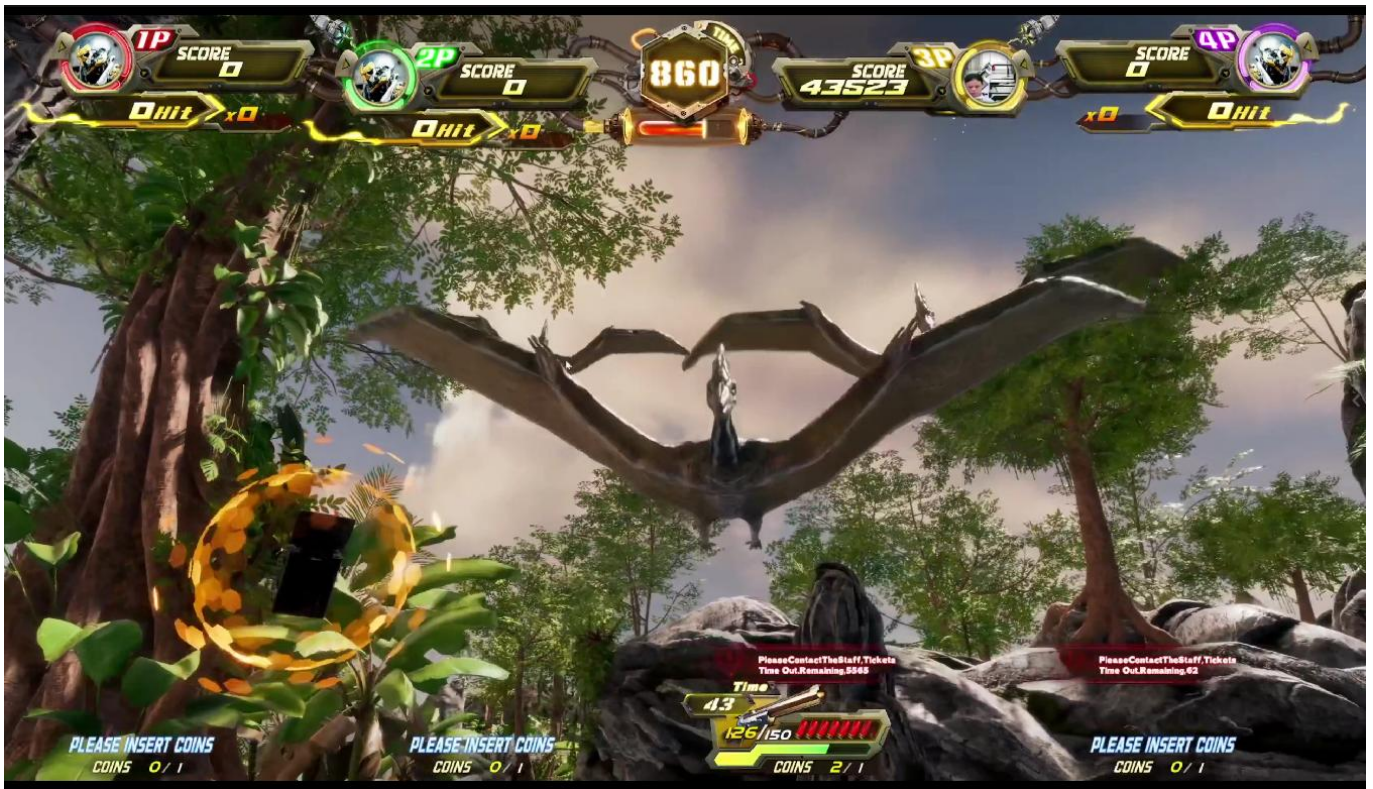
## 2. Route 2: The Dead Rising



## 3. Route 3: Shooting Training



#### 4. Route 4: Doomsday Hunting



#### 5. Route 5: Board Party

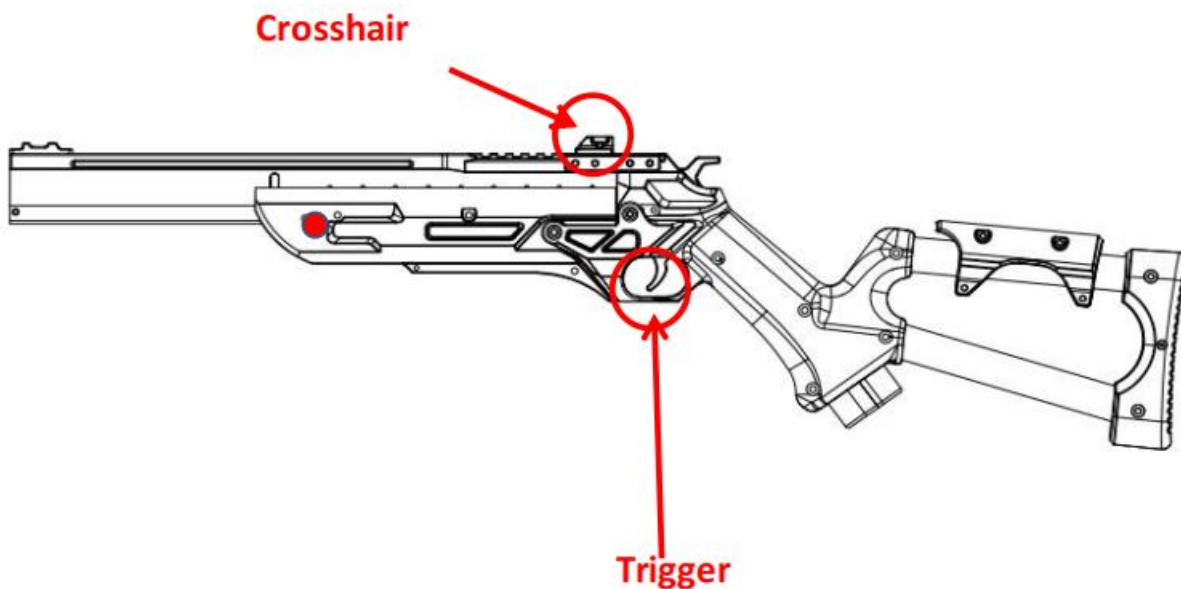


## 1. How to play

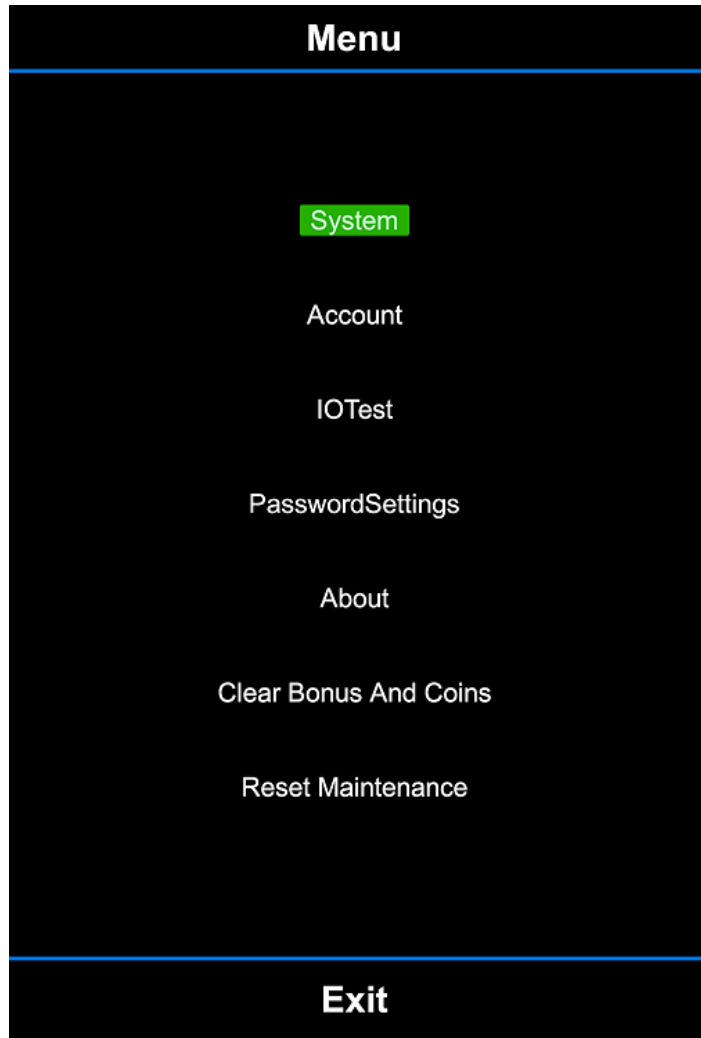
- ① Insert coins to start the game.
- ② Use the ← and → buttons to select a game scene, then press the Confirm button to enter the game.
- ③ Reach the required score within the time limit to pass the level and advance to the next stage.
- ④ Multiple players can compete simultaneously.
- ⑤ Tickets are awarded based on the player's score.

## 2. How to use the alloy toy rifle

- ① Pull the trigger to shoot during the game.
- ② Use the crosshair for accurate aiming and shooting.



### 3. Menu setting



**System:** Configure all game parameters

**Accounts:** View or reset account records

**IO Test:** Test external devices and calibrate the toy gun

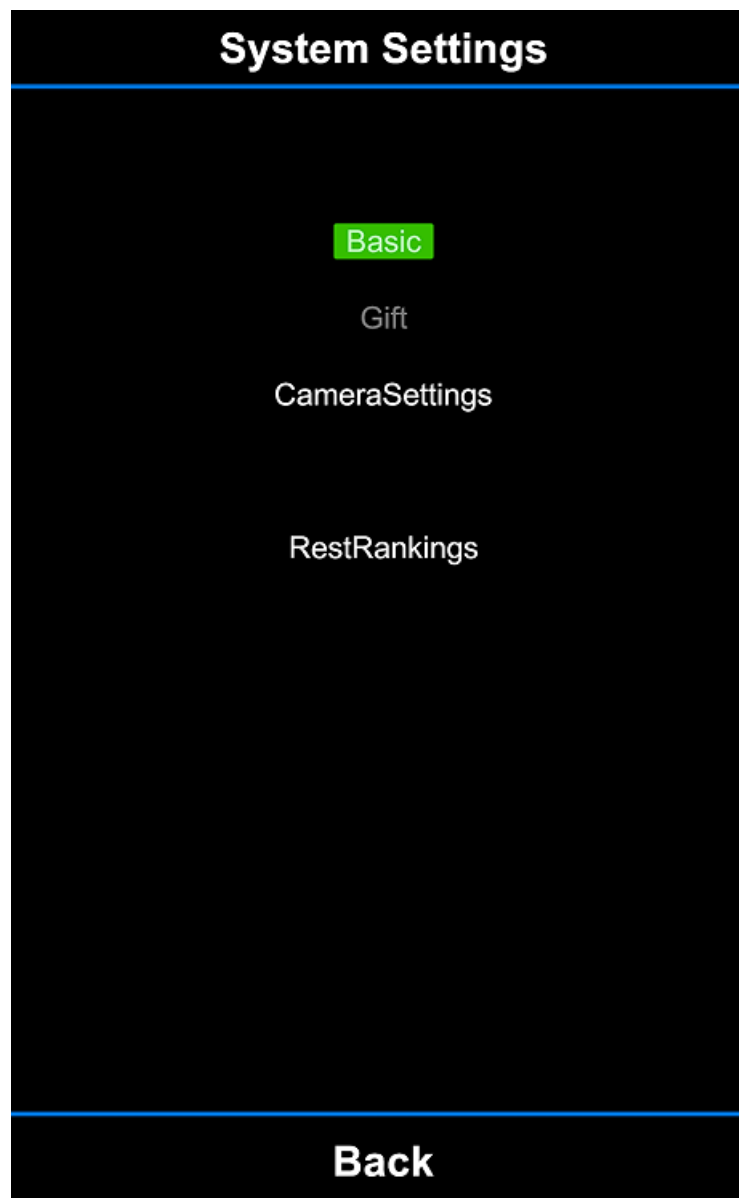
**Password Settings:** Change password

**About:** View game version information

**Clear Bonus And Coins:** Clear other device statistical data

**Reset Maintenance:** Clear device maintenance due reminders (Gear and Wrench Icon in lower right of screen)

1. **System:** You can get game time, coin count and other parameters.



## System > Basic

BasicSettings			
Coin Settings	2	Gas SwitchOn Time	80
Tickets	500	Player Time	180
AwardMode	Tickets	Game Level	Normal
Language	English	Stage-ShootingTraining-Bullets	200
Free	OFF	Stage-CrazyShooting-Bullets	200
DemoVOL	ON	Stage-TheDeadRising-Bullets	200
Continue	20	Stage-DoomsdayHunting-Bullets	200
BulletNumber	100	Stage-Board-Bullets	200
MaintenanceTime(Day)	15	IO Check	ON
Fever Time Interval	30	SelectStage Time	20
Fever Time	5		

- ① **Coin Settings:** Set the number of coins required per play (Range: 1–50 coins)
- ② **Tickets:** Points required to earn one ticket (Range: 10–15,000 points)
- ③ **Award Mode:** Ticket / Gift / Ticket + Gift / No Ticket & No Gift
- ④ **Language:** Chinese and English (toggle between languages)
- ⑤ **Free:** Enable or disable free play mode (ON = Free Mode)
- ⑥ **Domo VOL:** Music ON/OFF during idle mode
- ⑦ **Continue:** Time window to continue after game over (OFF / 10–30 seconds)
- ⑧ **Bullet Number:** Set number of bullets per game (50–1000)
- ⑨ **Maintenance Time (Day):** Reminder interval for machine maintenance

(15–30 days)

⑩ **Fever Time Interval:** Interval time for activating rapid fire function (5–60 seconds)

⑪ **Fever Time:** Duration of Rapid Fire after activation (0–20 seconds)

⑫ **Gas Switch On Time:** Adjust the single-shot ventilation duration of the gun (10-120 seconds, default 80, not recommended to adjust the default value)

⑬ **Player Time:** The duration of each game for each player (30-300 seconds)

⑭ **Game Level:** Set the game difficulty level (Normal / Easy / Hard)

⑮ **Stage-Shooting Training-Bullets:** Set number of bullets (50-1000)

⑯ **Stage-Crazy Shooting-Bullets:** Set number of bullets (50-1000)

⑰ **Stage-The Dead Rising-Bullets:** Set number of bullets (50-1000)

⑱ **Stage-Doomsday Hunting-Bullets:** Set number of bullets (50-1000)

⑲ **Stage-Board Party-Bullets:** Set number of bullets (50-1000)

⑳ **IO Check:** Enable or disable the detection function of the IO interface (ON / OFF)

## System › Camera Settings

version:1.0.0.a77  
S01:0 S02:0 S03:0 S07:0  
S04:0 S05:0 S06:0 B1:

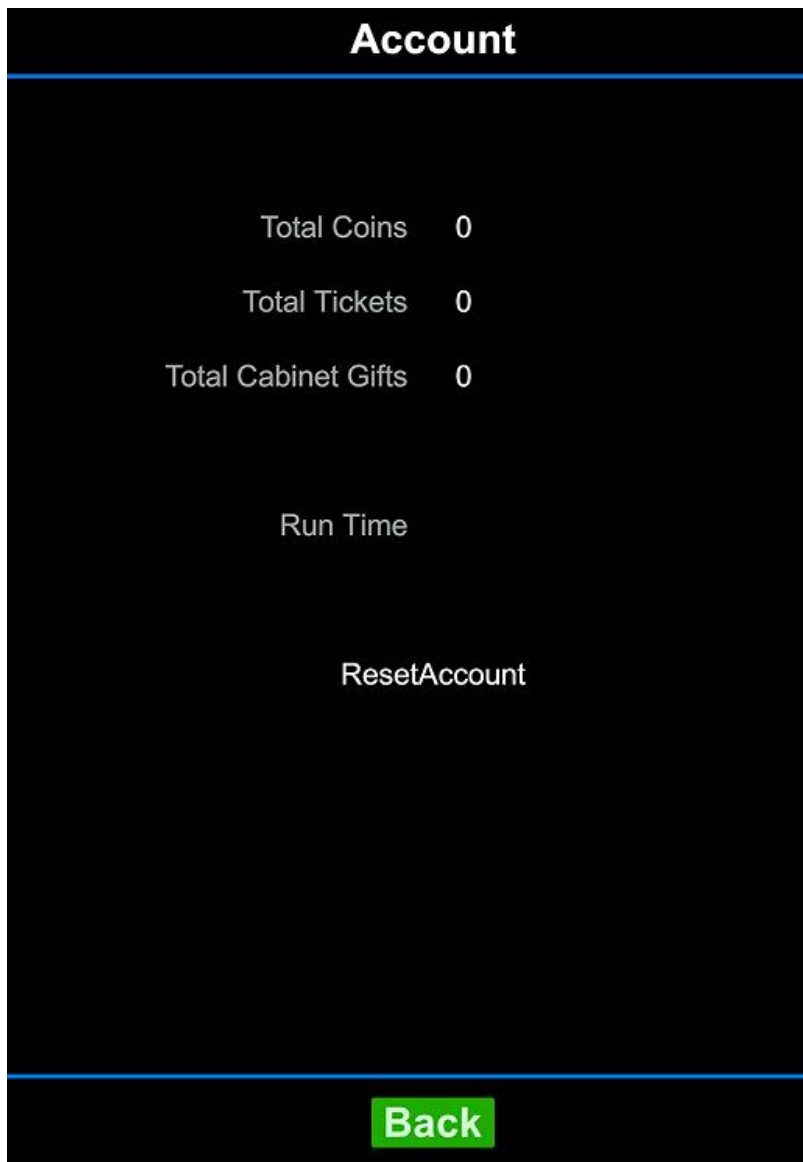
gun:0

### Camera

Player	PosX	PosY	SizeX	SizeY
P1	0.645	0.335	0.25	0.5
P2	0.485	0.335	0.25	0.5
P3	0.325	0.335	0.25	0.5
P4	0.14	0.335	0.25	0.5

ResetToDefaultDatas Back

2. **Account:** View backend revenue data or clear account records



3. **IO TEST**

**IO TEST › Gun:** Gun Adjustment

First, select the gun to calibrate (Gun 1, 2, 3, or 4).

Use the scope and crosshair on the shotgun to aim at the red dot at the center of the screen, then pull the trigger.

Shoot at the red dots indicated on the screen (top left, top right, bottom left, bottom right).

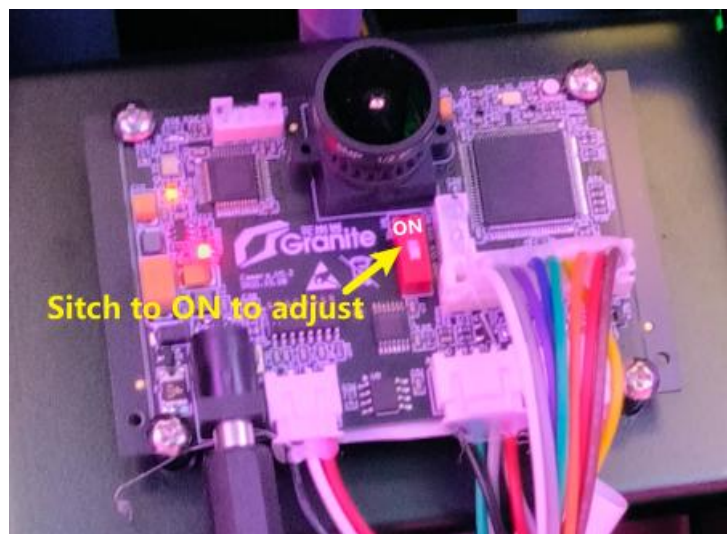


**IO TEST › Other: Other external devices IO test**

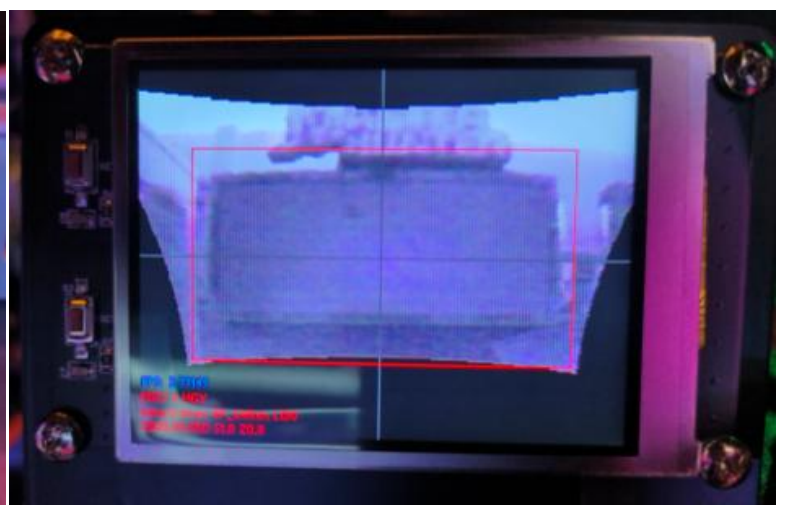


## 4. Camera Calibration

1. Turn the switch to the ON position.



2. Loosen the metal screws on both sides to adjust the camera position. The LCD screen should align within the red frame.



- ③ Press the Up button to perform keystone correction. Adjust the screen to fit within the red frame.
- ④ Turn the switch back to the OFF position